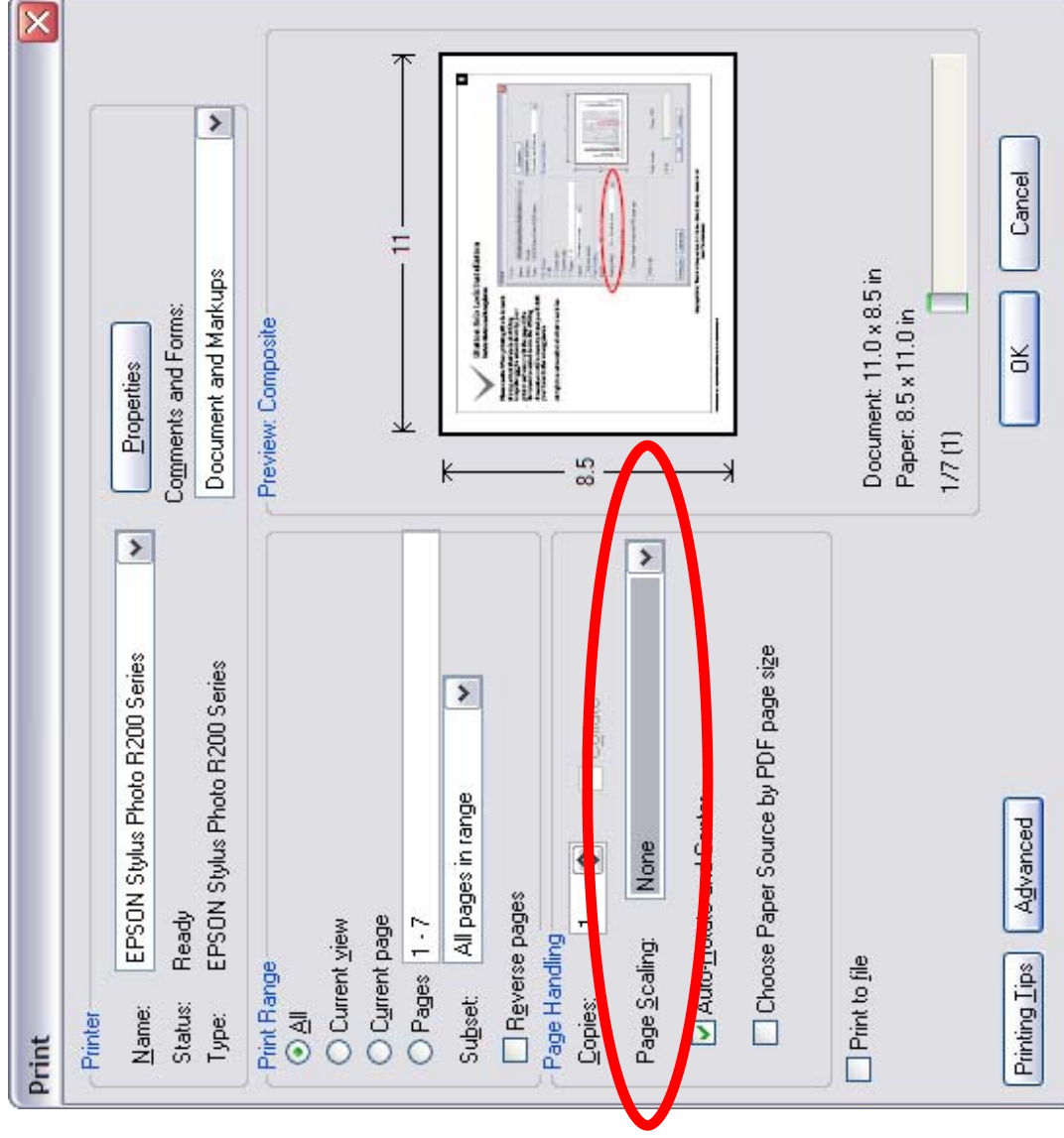




## CrossOver Lock Installation Instructions and templates

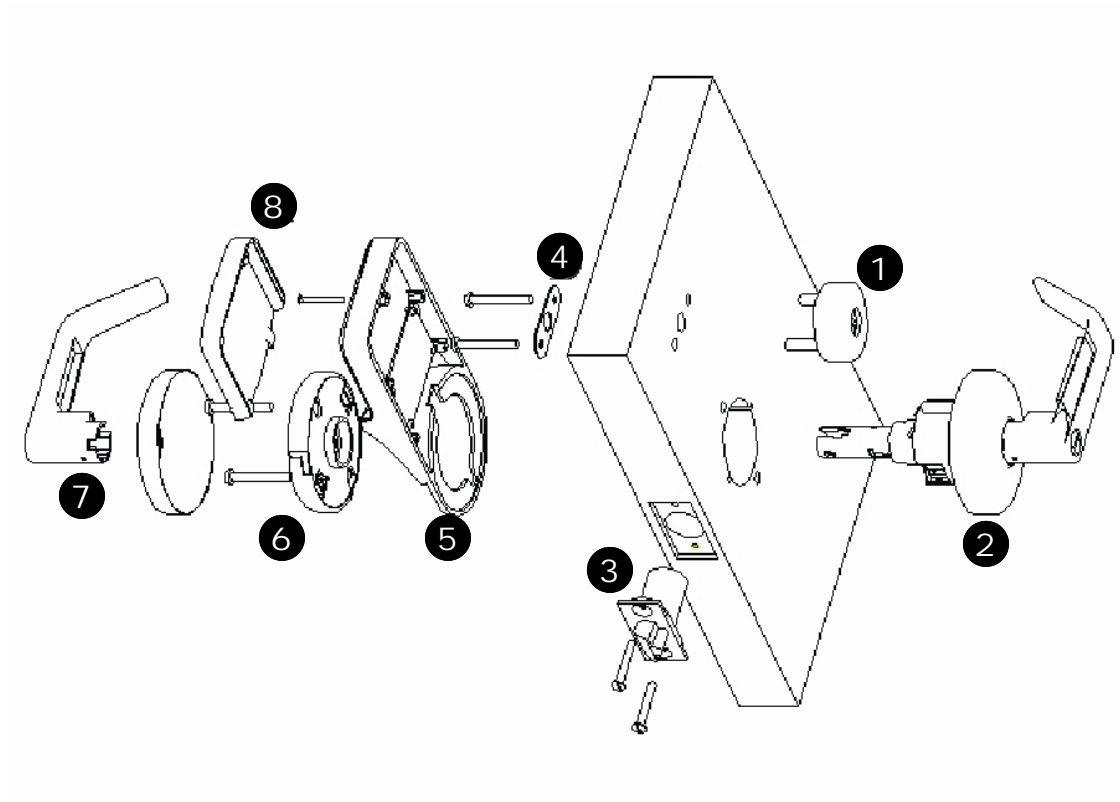
**Please note:** When printing this document, it's important that the lock drilling templates not be scaled down by your printer software to fit the page. If the document is scaled down, the drilling dimensions will be incorrect and you'll drill your holes in the wrong places.

At right is a screenshot of what to look for:



Copyright 2008, TimePilot Corporation, 340 McKee Street, Batavia, Illinois 60510  
[www.CrossOverLock.com](http://www.CrossOverLock.com)

## CrossOver X30 exploded view and parts list



Part No.	Description
1	iButton Reader
2	Front handle set
3	Latch
4	Battery case fixture

Part No.	Description
5	Battery case
6	Backset
7	Back handle
8	Battery Case Cover

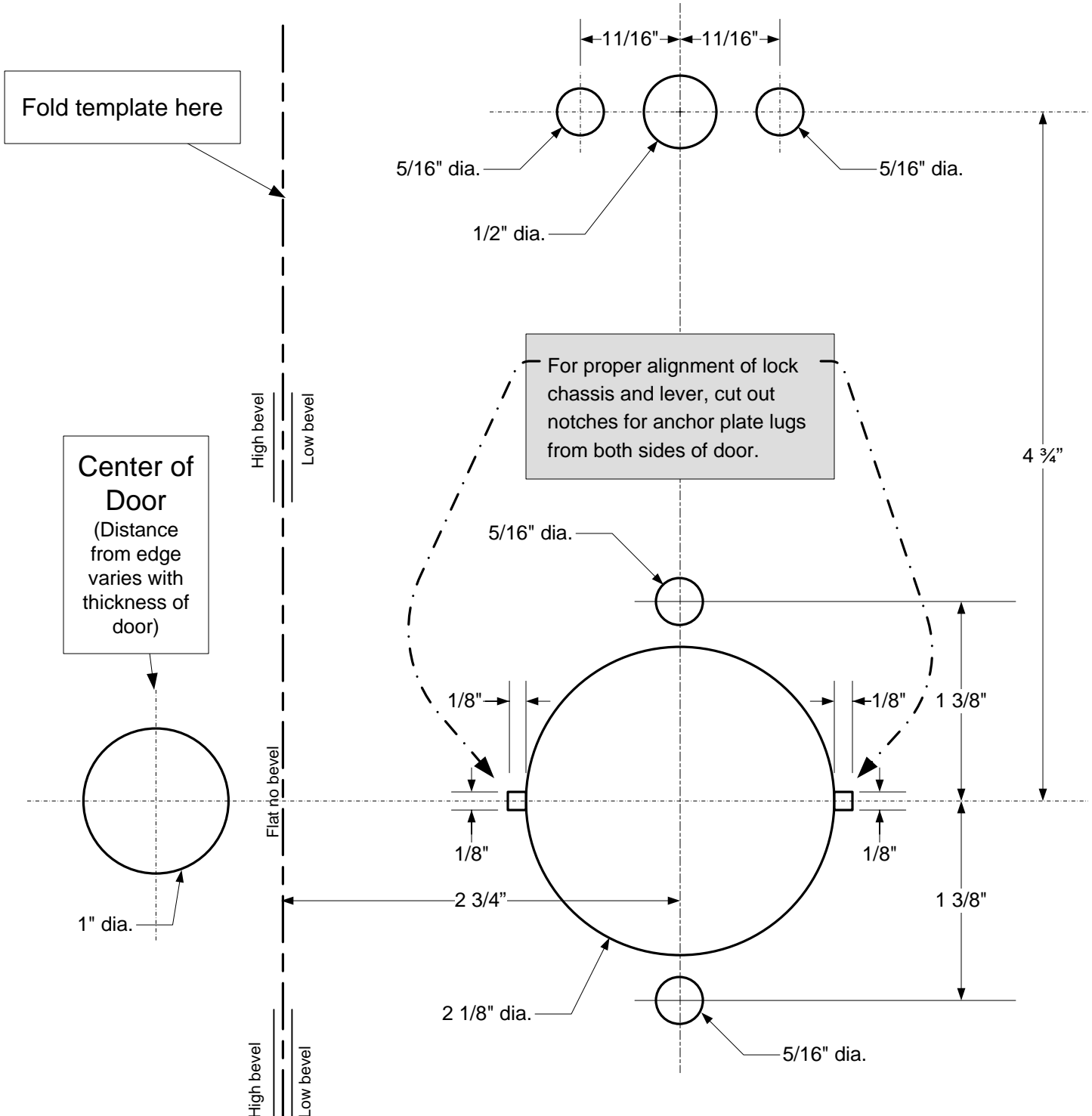
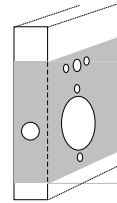
# CrossOver X30 Lock Installation Template

## 2 3/4" Backset

(See other side for 2 3/8" backset)

Fold and tape template to door as shown at right to drill in correct locations.

Drill bits needed: 2 1/8", 1", 1/2", 5/16"



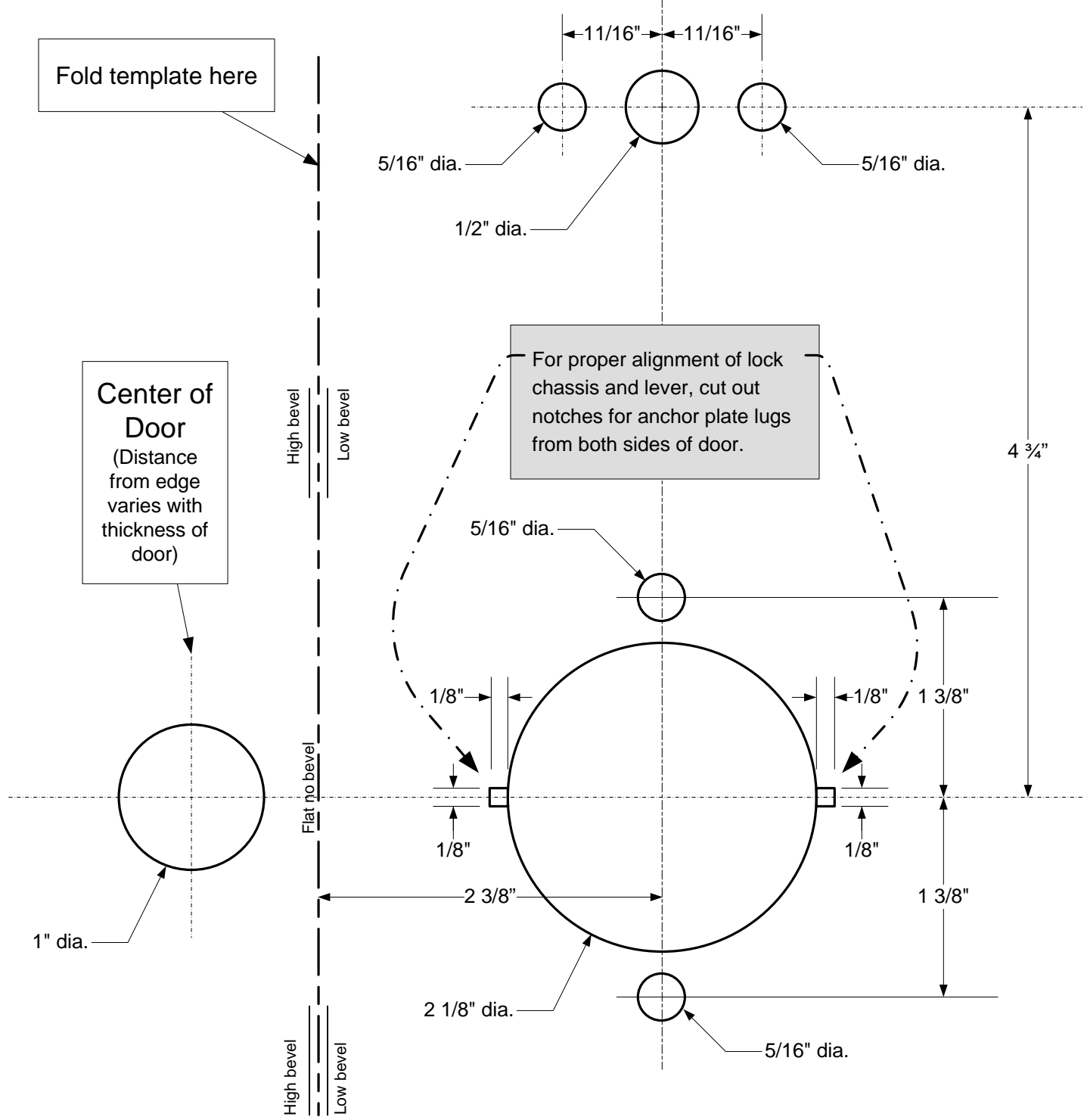
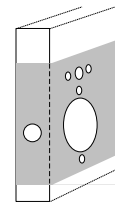
# CrossOver X30 Lock Installation Template

## 2 3/8" Backset

(See other side for 2 3/4" backset)

Fold and tape template to door as shown at right to drill in correct locations.

Drill bits needed: 2 1/8", 1", 1/2", 5/16"



Fold template here

Center of Door  
(Distance from edge varies with thickness of door)

For proper alignment of lock chassis and lever, cut out notches for anchor plate lugs from both sides of door.