



## **Solo Locker Lock**

### **Installation and User Instructions**

**TimePilot Corporation**  
340 McKee Street, Batavia, Illinois 60510  
[www.CrossOverLock.com](http://www.CrossOverLock.com) [www.TimePilot.com](http://www.TimePilot.com)



## Chapter 1

# Getting Started

The **TimePilot Solo Locker Lock** is simple to set up and configure. Here's how to use its main functions (the first three should be performed in order):

### **Chapter 1: Setting Up the Lock**

The lock can be set to re-lock itself a few seconds after opening or to remain open until you touch the receptor with your iButton.

### **Chapter 2: Setting a Master iButton Key**

The master key tells the lock which iButton keys will be able to open the lock. It's also needed to delete keys.

### **Chapter 3: Setting up iButton Keys**

How to program the lock to accept an iButton key. Each lock can accept as many as 15 keys.

### **Chapter 4: Deleting Individual User Keys**

How to program the lock to stop a key from opening the lock.

### **Chapter 5: Deleting All User Keys From a Lock**

How to program the lock to stop all keys (except the master) from opening a lock.

### **Chapter 6: Low Battery Indicator**

How to tell if your lock's batteries need replacing. **Please note: It is strongly recommended that the four AA batteries be replaced once a year.**

### **Appendix: Mounting instructions**

How to mount your Locker Lock.



## Chapter 2 Setting Up the Lock

Before you install the lock, the lock must be set to Classroom mode or Storehouse mode. In Classroom mode, the lock remains unlocked until it is tapped with an iButton to lock it; in Storehouse mode, the locker door locks upon closing.

- To set the lock to Classroom mode: Make sure the batteries are installed, then move the switch shown above to the left and tap the lock's receptor with an iButton.
- To set the lock to Storehouse mode, follow the same instructions as above, but move the switch to the right.





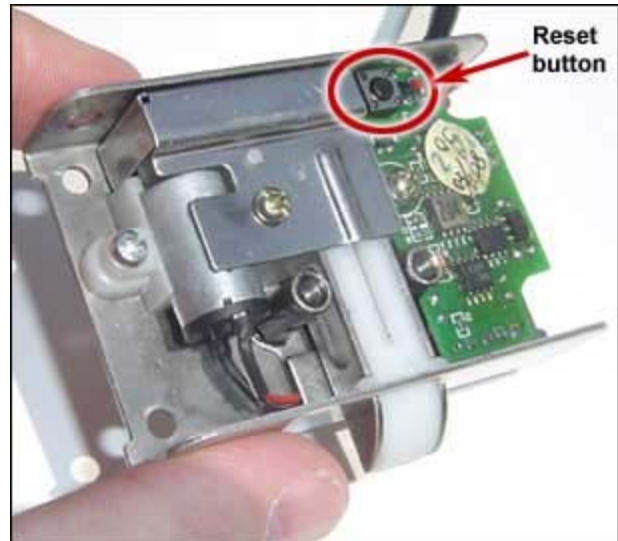
## Chapter 3

# Setting a Master iButton key

The TimePilot Solo Locker Lock can use any model of the iButton as its master key. Using the master key, you can give or deny other iButtons the ability to open the lock. Please note: Each lock can recognize only 15 iButton keys at a time.

To set up an iButton as a master key, follow these instructions:

1. After the lock and its batteries are installed, open the lock cover.
2. Press the reset button on the circuit board (see illustration). The green light will turn on on the lock's receptor.
3. While the green light is on, touch an iButton to the receptor.
4. You'll hear three "beeps," indicating that that iButton has been set as the master for that lock.



Please note: The lock only allows one master key at a time; when you set a master, you erase all traces of the previous master. If the master key is lost, use the instructions above to set a new one.



## Chapter 4

# Setting Up iButton keys

After the master key is set up, you can then set up the individual keys that will be used on the lock. Each lock can recognize only 15 iButton keys at a time.

To set up an individual key, follow these instructions:

1. Touch the master iButton key to the receptor. The lock will beep and the green light on the receptor will turn on.
2. With the green light on, touch the master key to the receptor again. The lock will emit a beep and the green light will flash.
3. While the green light is flashing, touch the iButton key you want to set up to the receptor. The lock will beep to indicate a successful setup.
4. While the green light is flashing, you can repeat the process for other keys.



## Chapter 5

# Deleting individual user keys

To delete a key from a lock, follow these instructions:

1. Touch the master iButton key to the receptor. The lock will beep and the green light on the receptor will turn on.
2. With the green light on, touch the master key to the receptor again. The lock will emit a beep and the green light will flash.
3. Touch the iButton key you want to delete to the receptor. The lock will beep twice to indicate a successful deletion.



## Chapter 6

# Deleting All User Keys from a Lock

To clear the lock of all user keys, follow these instructions:

1. Touch the master iButton key to the receptor. The lock will beep and the green light on the receptor will turn on.
2. With the green light on, touch the master key to the receptor again. The lock will emit a beep and the green light will flash.
3. Touch the master key to the receptor for a third time. The lock will beep three times to indicate that all keys have been deleted.



## Chapter 7

# Low Battery Indicator

When the batteries are low, the lock will emit a series of long beeps when an iButton is touched to the receptor.  
**Please note: It is strongly recommended that the four AA batteries be replaced once a year.** If the batteries die, there is no way to get into the locker or cabinet except to break in.